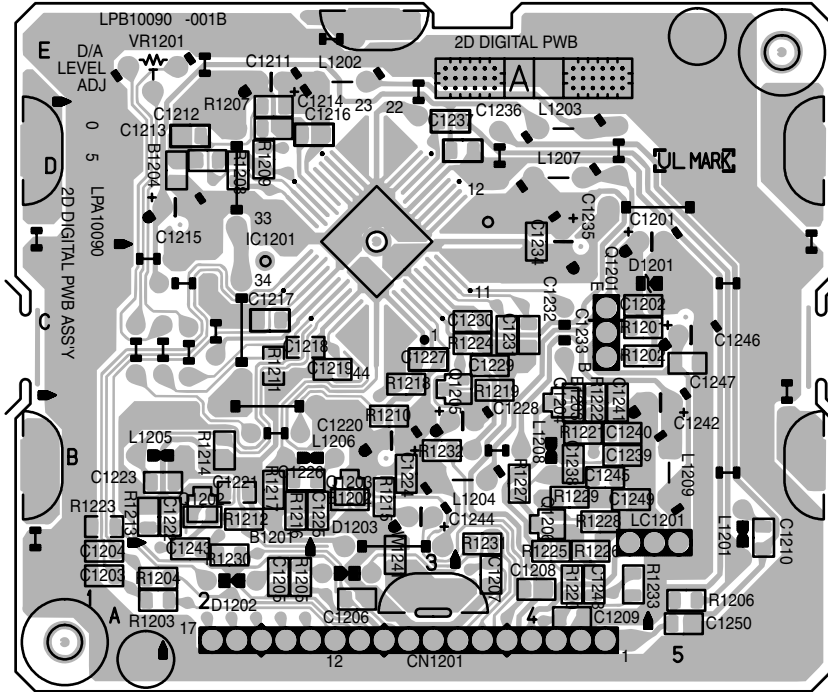


SECTION 4 CHARTS AND DIAGRAMS

4.1 2D DIGITAL CIRCUIT BOARD

**<05> 2D DIGITAL
LPB10090-001B**



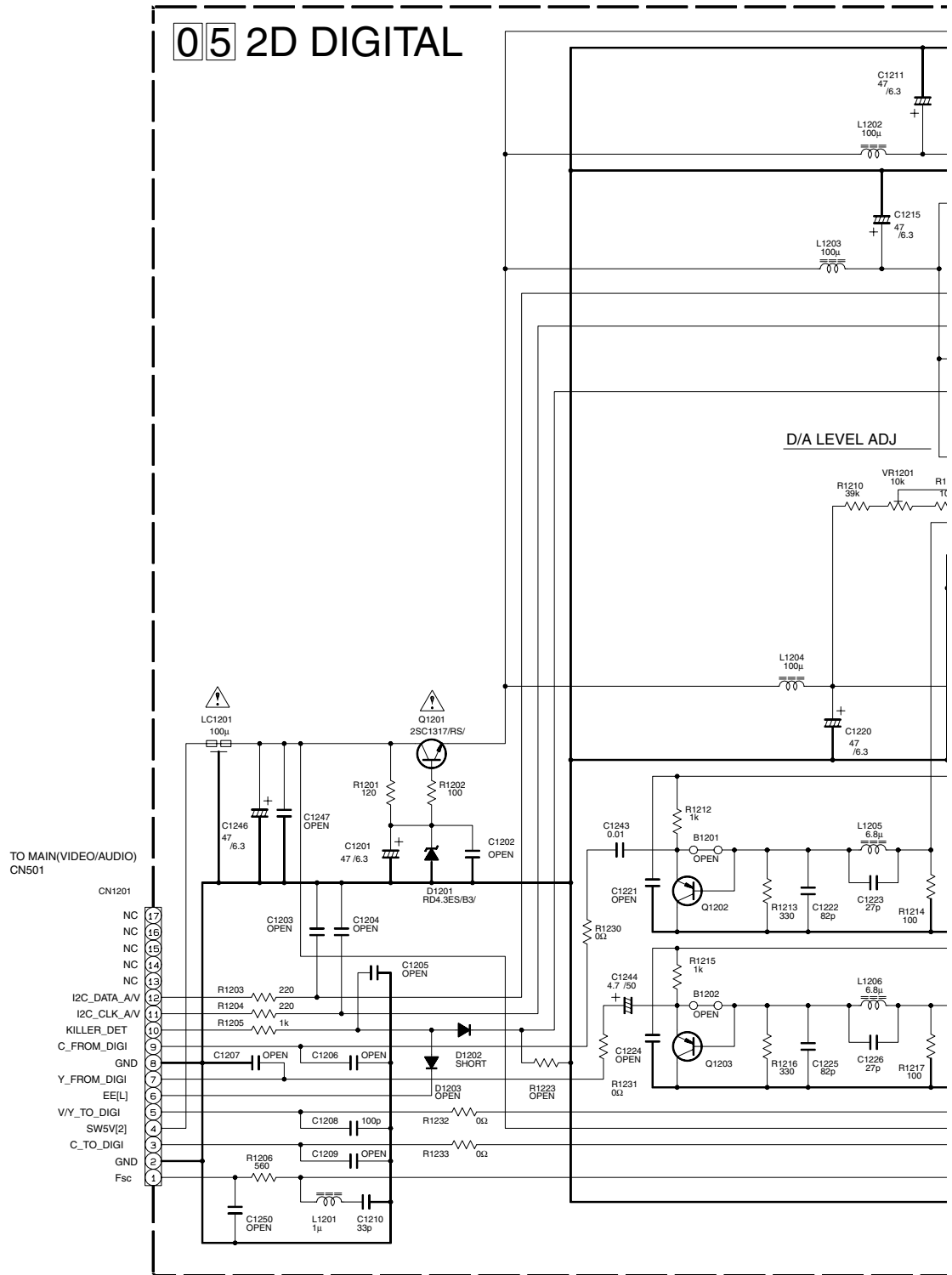
COMPONENT PARTS LOCATION GUIDE <2D DIGITAL>

REF.NO.	LOCATION	REF.NO.	LOCATION	REF.NO.	LOCATION	REF.NO.	LOCATION
CAPACITOR							
C1201	A D	5D	C1230	B C	4C	R1212	B C
C1202	B C	5C	C1231	B C	4C	R1213	B C
C1203	B C	1A	C1232	B C	4C	R1214	B C
C1204	B C	1A	C1233	A D	4C	R1215	B C
C1205	B C	2A	C1234	B C	4D	R1216	B C
C1206	B C	3A	C1235	A D	4D	R1217	B C
C1207	B C	4A	C1236	B C	4D	R1218	B C
C1208	B C	4A	C1237	B C	3D	R1219	B C
C1209	B C	4A	C1238	B C	4B	R1220	B C
C1210	B C	6B	C1239	B C	5B	R1221	B C
C1211	A D	2E	C1240	B C	5B	R1222	B C
C1212	B C	2D	C1241	B C	5B	R1223	B C
C1213	B C	2D	C1242	A D	5B	R1224	B C
C1214	B C	2D	C1243	B C	2A	R1225	B C
C1215	A D	2D	C1244	A D	3B	R1226	B C
C1216	B C	3D	C1245	B C	5B	R1227	B C
C1217	B C	2C	C1246	A D	5C	R1228	B C
C1218	B C	2C	C1247	B C	5C	R1229	B C
C1219	B C	3C	C1248	B C	4A	R1230	B C
C1220	A D	3B	C1249	B C	5B	R1231	B C
C1221	B C	2B	C1250	B C	5A	R1232	B C
C1222	B C	2B				R1233	B C
C1223	B C	2B				VR1201	A D
C1224	B C	3B					
C1225	B C	3B					
C1226	B C	2B					
C1227	B C	3C					
C1228	A D	3B					
C1229	B C	4C					
COIL							
L1201	A D	5A	R1201	B C	5C	OTHER	
L1202	A D	3E	R1202	B C	5C	LC1201	A D
L1203	A D	4D	R1203	B C	1A		
L1204	A D	4B	R1204	B C	1A		
L1205	A D	2B	R1205	B C	2A		
L1206	A D	3B	R1206	B C	5A		
L1207	A D	4D	R1207	B C	2D		
L1208	A D	4B	R1208	B C	2D		
L1209	A D	5B	R1209	B C	2D		
TRANSISTOR							
Q1201	A D	5C	R1210	B C	3B		
Q1202	B C	2B	R1211	B C	2C		
Q1203	B C	3B					
Q1204	B C	4B					
Q1205	B C	3C					
Q1206	B C	4B					
RESISTOR							
R1201	B C	5C					
R1202	B C	5C					
R1203	B C	1A					
R1204	B C	1A					
R1205	B C	2A					
R1206	B C	5A					
R1207	B C	2D					
R1208	B C	2D					
R1209	B C	2D					
R1210	B C	3B					
R1211	B C	2C					
CONNECTOR							
CN1201	A D	5A					
DIODE							
D1201	A D	5C					
D1202	A D	2A					
D1203	A D	3A					
IC							
IC1201	B C	3D					

4.2 2D DIGITAL SCHEMATIC DIAGRAM

5
4
3
2
1

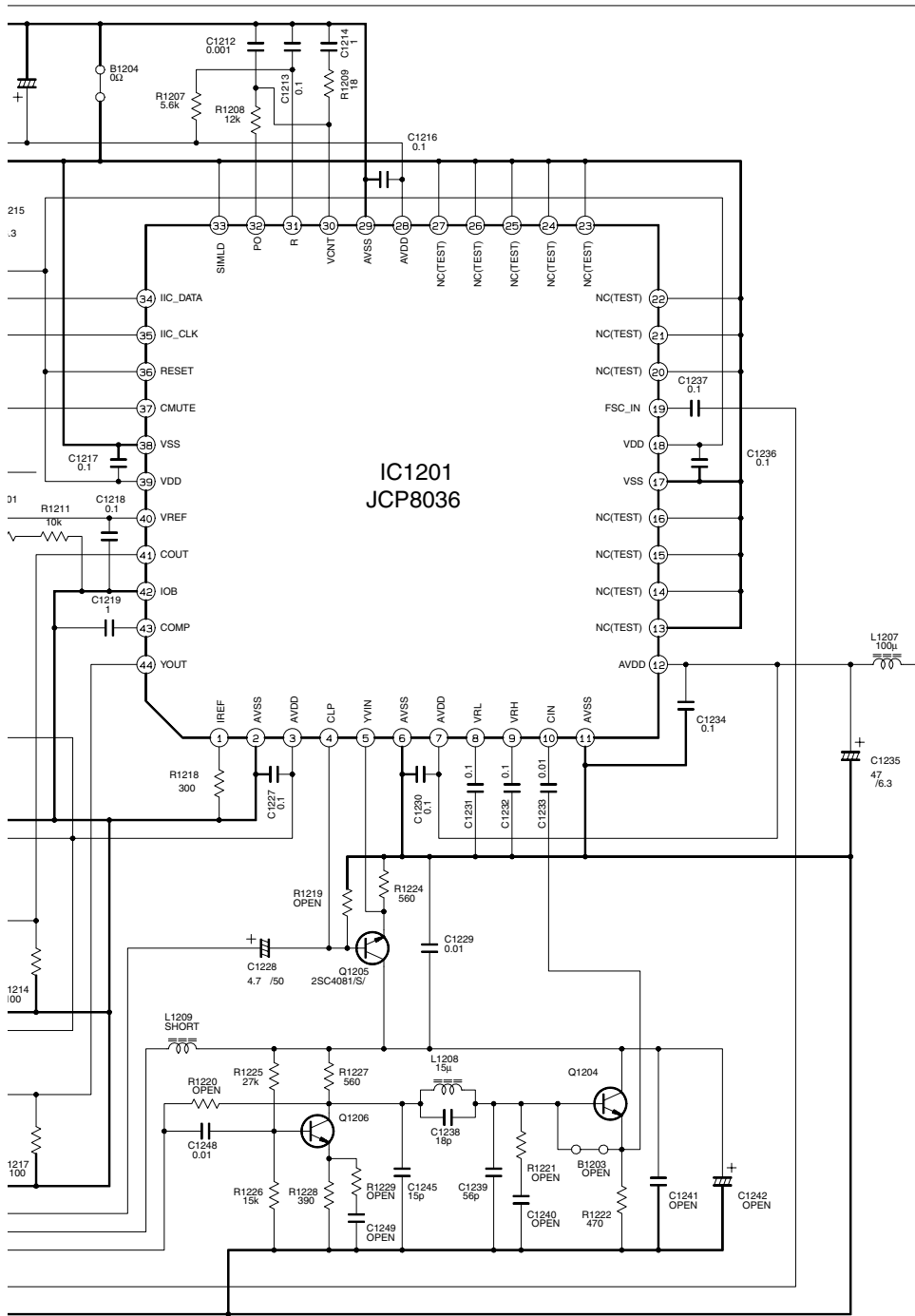
05 2D DIGITAL



ALL NPN TYPE TRANSISTORS ARE 2SC4081/QRS/ or 2SD1819A/QRS/ or 2PC4081/R/
ALL PNP TYPE TRANSISTORS ARE 2SA1576A/QR/ or 2SB1218A/QR/ or 2PA1576/R/.

4-2 A B C D

Note : The Parts Number, value and rated voltage etc. in the Schematic Diagram are for references only. When replacing the parts, refer to the Parts List.



NOTES: UNLESS OTHERWISE SPECIFIED.
 ALL RESISTANCE VALUES ARE IN OHMS.
 ALL INDUCTANCE VALUES ARE IN H.
 ALL CAPACITANCE VALUES ARE IN μ F.

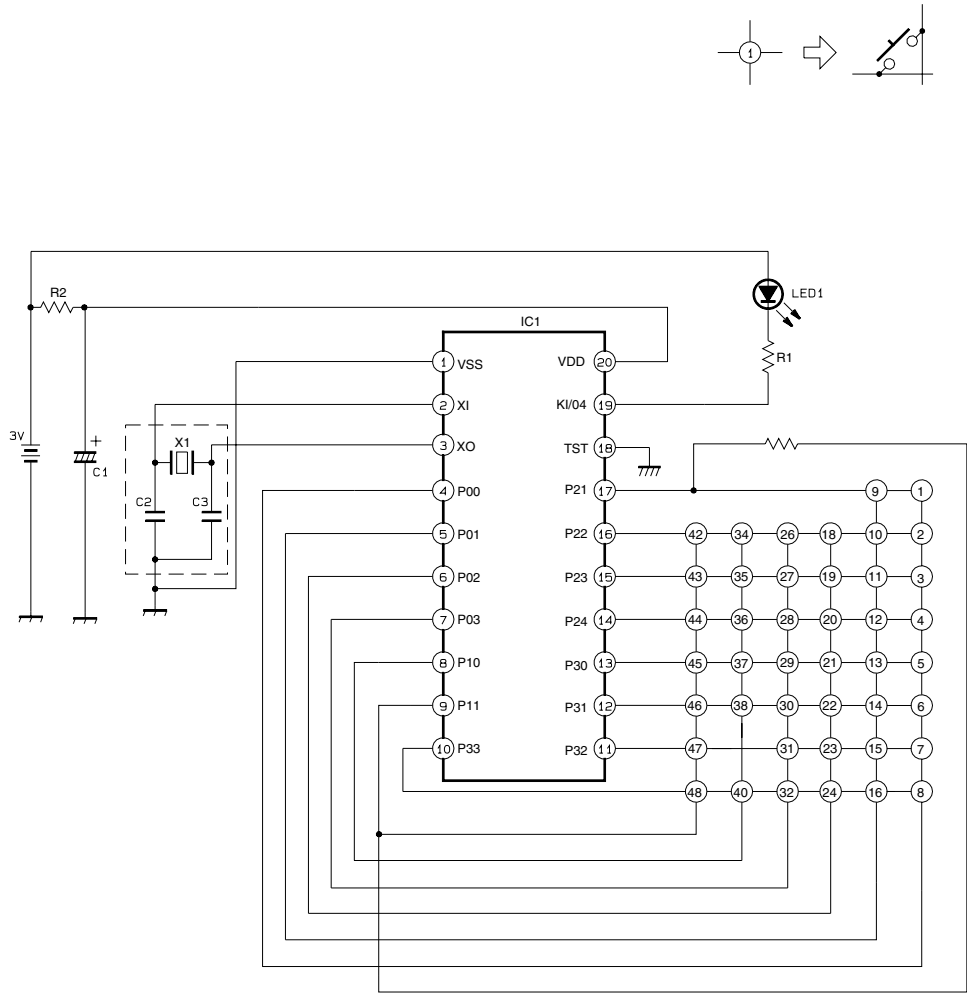
- ELECTROLYTIC
- CERAMIC
- MYLER
- NON POLAR

4.3 REMOTE CONTROLLER SCHEMATIC DIAGRAM

NOTES:

1. All parts shown in this schematic are critical for safety.
2. This schematic is only for reference.
- Avoid replacing individual parts.
- Replace the entire unit only.

REMOTE CONTROLLER



(LP20878-010#, LP20878-011#)

Key No.	Key Name
1	TV
2	PROG
3	⊙?(PROG CHECK)
4	ENTREE
5	30 SEC ⏪
6	PR -
7	DATE -
8	--:--
9	●(REC)
10	⏪ ⏩ (REW)
11	PR +
12	START/DEBUT +
13	STOP/FIN +
14	DATE +
15	START/DEBUT -
16	STOP/FIN -
18	MENU
19	0... / AUX
20	8 TV / DAILY/QTDN.
21	4 GHz
22	▼
23	⏪
24	⊙
26	AUDIO/ ⏸ / (MUTE)
27	▶ (PLAY)
28	X/0000(CANCEL)
29	7 PQRS / VSP/PDC
30	⊙ / (POWER)
31	5 JKL
32	⏸ (PAUSE)
34	2 ABC
35	6 MNO
36	TV/VCR
37	⏸ / (SP/LP)
38	⏪
40	▲
42	3 DEF
43	⏩ (FF)
44	■(STOP)
45	RE-VIEW
46	1. /
47	9 wxyz / WEEKLY/HEBDO
48	OK
9+27	REC START
9+32	REC PAUSE
1+30	POWER
1+36	TV/VCR
1+26	MUTE
1+37	MAIN/SUB
1+38	TV ⏪ -
1+40	TV PR +
1+23	TV ⏪ +
1+22	TV PR -